

Technical Advisory Group 4

Dale Douglass, Chair
Iraklion, Crete, Greece
2 April, 2009

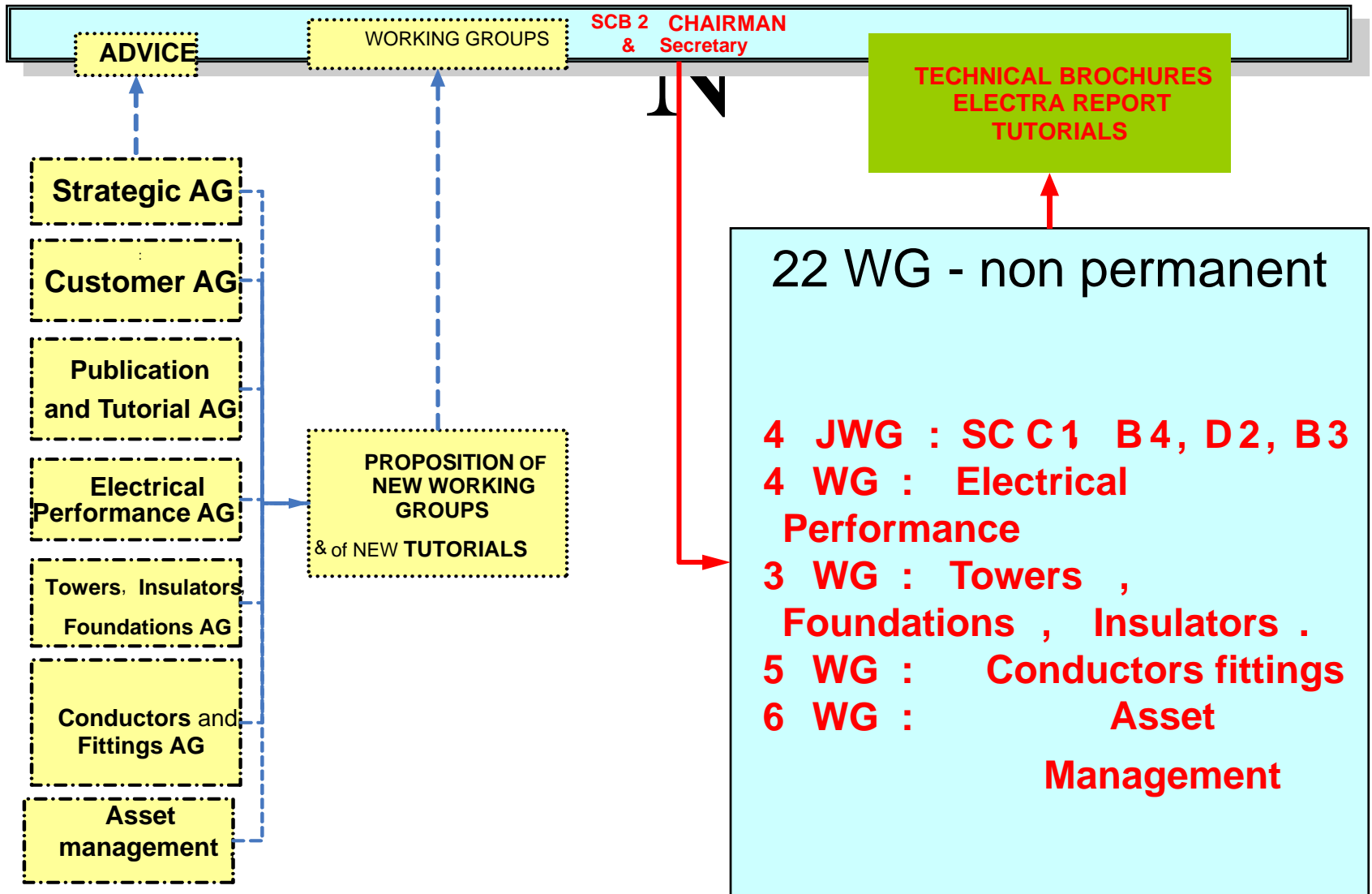
What is TAG 4?

- It is a permanent collection of experts some of whom may also be in one or more WGs
- It advises the SC B2 Chair in running the SC and coordinates and populates WGs.
- There are three other TAG's
 - TAG 5 Towers/Insulators/Foundations (6/7/8)
 - TAG 6 Conductors & fittings (11)
 - TAG 7 Asset Management (13)

What is a WG or JWG?

- It is a group of experts assembled to accomplish a specific TOR in 3 years.
- It disappears after publishing the result of its work (guide, brochure, article).
- The chair of a WG is directly responsible to a Study Committee chair but cooperates with a TAG.
- WG members largely consist of experts who are permanent members of TAGs.

ORGANISATIO



TASKS OF THE AG B2.04

- 1 Coordinate the activities of assigned WGs & provide both WG members and casual consulting services as appropriate.
- 2 Identify industry needs and propose TORs for new WGs, Tutorials, and Collocquia to meet them.
- 3 Attract new experts and retain existing members by drawing on skills for new projects & informal consultation in WG activities
4. Coordinate WG meetings and activities
5. Establish and maintain contact with other TAGs and non-CIGRE orgs
6. Through SAG and CAG participation, facilitate coordination between different technical areas within the Study Committee.

Component Groups under TAG 4

- TF B2.20 - Management of risks due to load-flow capacity increases in Transmission Overhead Lines J. PESTOURIE (FR) 2005-2008 completed
- WG B2.26 A Guide to Eval. & Accept. New Types of Overhead Conductor incl. those running at high temperature T. SEPPA 2008-2009 To SC B2 reviewers April 2009
- WG B2.36 Guide for Application of Direct real time monitoring systems on Overhead Transmission lines. R. STEPHEN 2008-2010
- WG B2.38 Evaluation of HSIL Solutions for Increased Natural Capacity of OHTL OSWALDO REGIS (BRA) 2008-2010

Proposed WGs and XGs 2008-2012

- Assume we can support 8 activities simultaneously – 4 WGs and 4XGs.
- 2008 – 4WGs (20, 26, 36, 38)
- 2008 – 4 XGs
 - Thermal Model Update TB207 (XG)
 - High Temp Aging of Conductor Systems (XG)
 - Update of TB 244 “Evaluation of HTLS Conductors for Uprating incl. tutorial (XG)
 - Plan Compact Line/Voltage Upgrade colloquium in cooperation with C4 (XJG)
 - Other?

Proposed WGs and XGs 2009

- Two WGs (20, 26) end early in 2009.
- Can add two new WGs – which of XGs?
 - Thermal Model Update TB207 (XG)
 - High Temp Aging of Conductor Systems (XG)
 - Update of TB 244 “Evaluation of HTLS Conductors for Upgrading incl. tutorial (XG)
 - Plan Compact Line/Voltage Upgrade colloquium in cooperation with C4 (XJG)
 - Ac/dc Conversion of existing lines (elec)
 - Economic analysis of reactive component alternatives to compact high SIL

